

ALBA ROLLER ASSEMBLIES

Standard Gravity Rollers

Part No.	Description	Available Bearings
196S	1.9" diameter x 16 ga. wall, 7/16" hex axles, spring retained	# 1005, LIGHT OILED, 130 lbs. / bearing
192S	1.9" diameter x 12 ga. wall, 7/16" hex axles, spring retained	# 1690, light oiled, 130 lbs. / bearing # MFC-1710-7H, 252 lbs. / bearing # FR-1707-7HDS, 428 lbs. / bearing
199S	1.9" diameter x 9 ga. wall, 7/16" hex axles, spring retained	# MFC-1710-7H, 252 lbs. / bearing # FR-1707-7HDS, 428 lbs. / bearing
254S	2-1/2" diameter x 14 ga. wall, 7/16" hex axles, spring retained	# 1500/3135, 150 lbs / bearing
251S	2-1/2" diameter x 11 ga. wall, 11/16" hex axles, spring retained	# MFC-2280-11H, 425 lbs. / bearing # FR-2265-11HDS, 1,050 lbs. / bearing # 33W9, ABEC-1, 1,475 lbs. / bearing
297S	2-9/16" diameter x 7 ga. wall, 11/16" hex axles, spring retained	# MFC-2280-11H, 425 lbs. / bearing # FR-2265-11HDS, 1,050 lbs. / bearing # 0973600, 1,675 lbs. / bearing # 33W9, ABEC-1, 1,475 lbs. / bearing
3509S	3-1/2" diameter x 9 ga. wall, 11/16" hex axles, spring retained	# 2512 / 3500, 290 lbs / bearing
3530S	3-1/2" diameter x .300 wall, 1-1/16" hex axles, pin retained	# 1083-2A, 1,250 lbs / bearing # HDCB0611, 4,750 lbs. / bearing
425438S	4-1/4" diameter x 7/16" wall, 1-1/4" hex axles, pin retained	# B1101-2, 2,250 lbs / bearing
50750S	5" diameter x 3/4" wall, 1-1/2" hex axles, pin retained	# B1120-2, 3,750 lbs. / bearing

When ordering please specify the following:

- Part no.
- Between frame dimension - (inches)
- Bearing type

Example:

251S-24-MFC-2280-11H

Part No. _____
 Between Frame Dimension _____
 Bearing Type _____

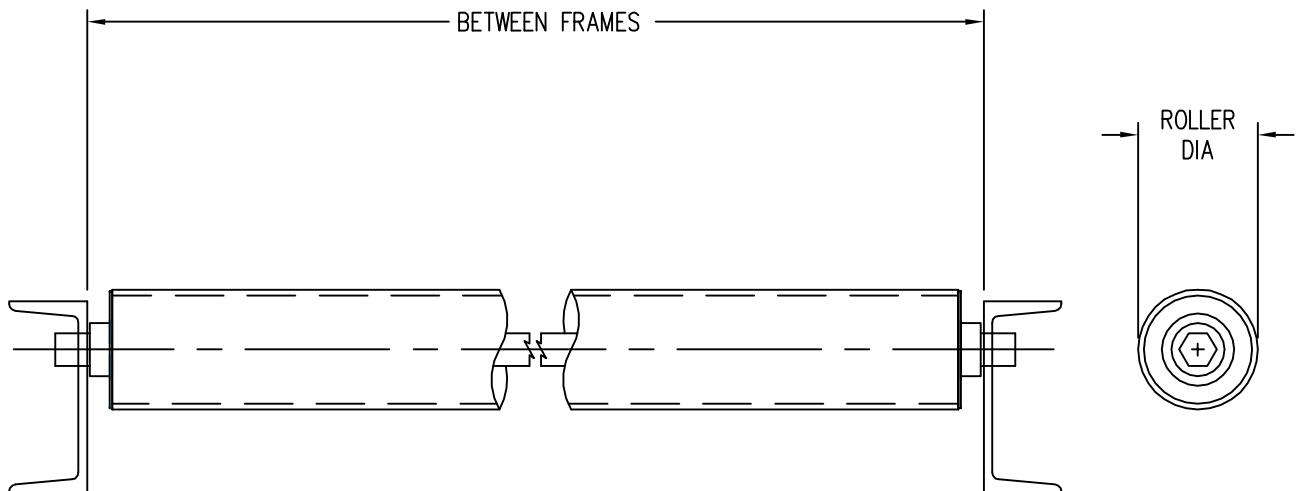
MOVE IT
 on Conveyors by ...



MANUFACTURING, INC.

ALBA ROLLER ASSEMBLIES

Standard Gravity Roller Drawing:



** See options page for other roller configurations available*

MOVE IT
on Conveyors by ...

Alba

MANUFACTURING, INC.

ALBA ROLLER ASSEMBLIES

Available Roller Assembly Options:

- ***ABEC-1 bearings available for 1.9", 2-1/2" and 2-9/16" diameter rollers***
- ***Zinc Flo-coated roller tubing available on 2-1/2" diameter X 11 gauge rollers***
- ***Zinc plated rollers and axles***
- ***Stainless steel rollers, sprockets, bearings and axles***
- ***Tapered rollers***
- ***Polyurethane roller covers***
- ***UHMW sleeves***
- ***Rollers with live axles***
- ***Pin retained hex axles***
- ***Custom configurations***