

# GRAVITY CONVEYOR ROLLERS



## Roller Diameters

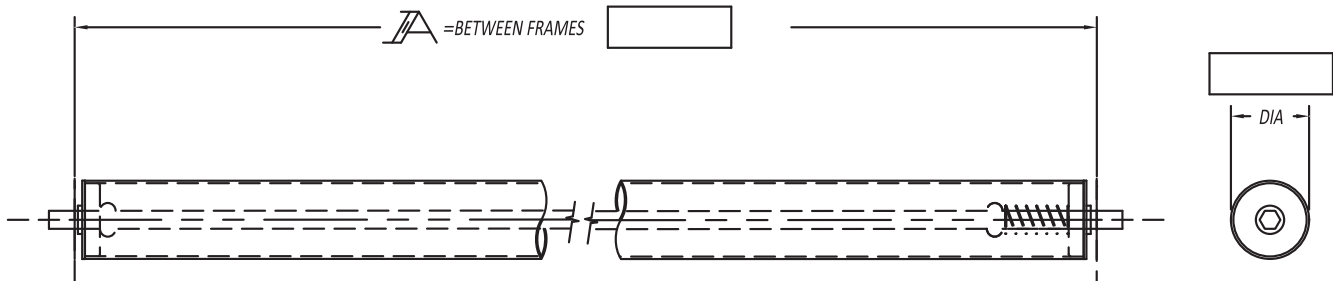
1.9", 2-1/2", 2-9/16", 3-1/2", 4-1/4", 5"

### When Ordering Please Specify the Following:

- Part Number
- Between Frame Dimensions
- Bearing Type

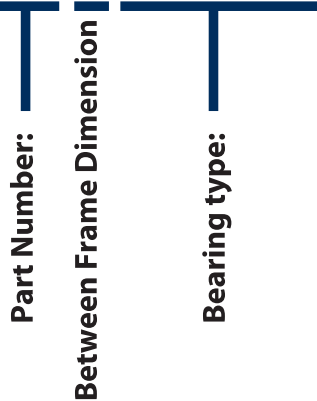
### Options:

- Zinc Plated Rollers & Axles
- Galvanized Tubing
- Polyurethane Roller Covering
- Custom Configurations



QUANTITY:

Example: 251S-24-MFC-2280-11H



866.252.2634  
www.albamfg.com  
rocksolidconveyor@albamfg.com



Part Number	Description	Available Bearings
196S	1.9" diameter x 16 ga. wall, 7/16" hex axles, Spring retained	# 1005, light oiled, 130 lbs. / bearing
192S	1.9" diameter x 12 ga. wall, 7/16" hex axles, Spring retained	# 1690, light oiled, 130 lbs. / bearing # MFC-1710-7H, 252 lbs. / bearing # FR-1707-7HDS, 428 lbs. / bearing
199S	1.9" diameter x 9 ga. wall, 7/16" hex axles, Spring retained	# MFC-1710-7H, 252 lbs. / bearing # FR-1707-7HDS, 428 lbs. / bearing
254S	2-1/2" diameter x 14 ga. wall, 7/16" hex axles, Spring retained	# 1500/3135, 150 lbs. / bearing
251S	2-1/2" diameter x 11 ga. wall, 11/16" hex axles, Spring retained	# MFC-2280-11H, 425 lbs. / bearing # FR-2265-11HDS, 1,050 lbs. / bearing # 33W9, ABEC-1, 1,475 lbs. / bearing
297S	2-9/16" diameter x 7 ga. wall, 11/16" hex axles, Spring retained	# MFC-2280-11H, 425 lbs. / bearing # FR-2265-11HDS, 1,050 lbs. / bearing # 0973600, 1,675 lbs. / bearing # 33W9, ABEC-1, 1,475 lbs. / bearing
3509S	3-1/2" diameter x 9 ga. wall, 11/16" hex axles, Spring retained	#2512 / 3500, 290 lbs. / bearing
3530S	3-1/2" diameter x .300 wall, 1-1/16" hex axles, Pin retained	# 1083-2A, 1,250 lbs. / bearing # HDCB0611, 4,300 lbs. / bearing
425438S	4-1/4" diameter x 7/16" wall, 1-1/4" hex axles, Pin retained	# B1101-2, 2,250 lbs. / bearing
50750S	5" diameter x 3/4" wall, 1-1/2" hex axles, Pin retained	# B1120-2, 3,750 lbs. / bearing