



MZPA CONVEYORS

Motorized Zero Pressure Accumulation

Value Added • User Friendly

Control Features:

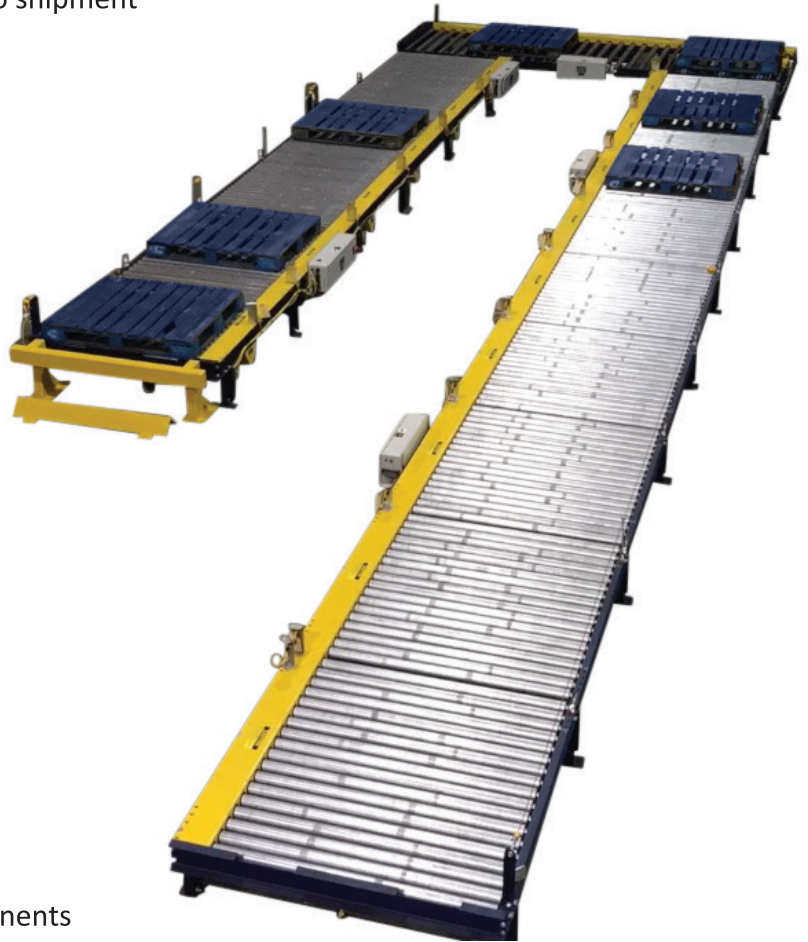
- Allen-Bradley MicroLogix PLC controlled system
- Pre-programmed and factory tested prior to shipment

Expandable:

- Add conveyors and devices
- Free software
- Program using Rockwell Automation's connected components
- Workbench software downloadable from Allen-Bradley website
- Software allows flexibility without expensive technical support

Easy to Program:

- Standard USB programming connectivity
- Standard Modbus Communication
- Optional Ethernet capability allows for communication with other systems
- Plug and Play cabling configuration
- Reduces installation time and maintenance
- No proprietary components
- Commercially available off-the-shelf components
- Parts and service available globally from any Allen-Bradley distributor
- 24VDC Control Voltage

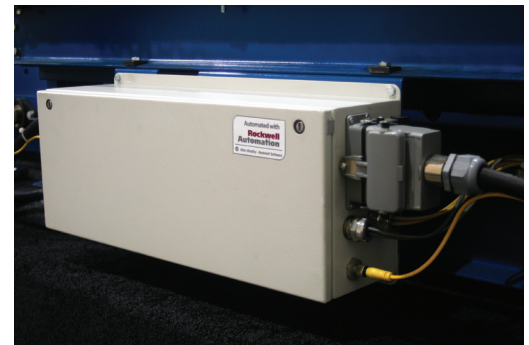


Easy to Program • Plug and Play Functionality

Individually Motor Driven Zero Pressure Accumulation (MZPA) Controls are available on all Alba conveyors. Each accumulation zone is individually motor driven. The system includes all the controls and devices pre-mounted, wired and programmed for basic plug and play zero pressure indexing accumulation of product.

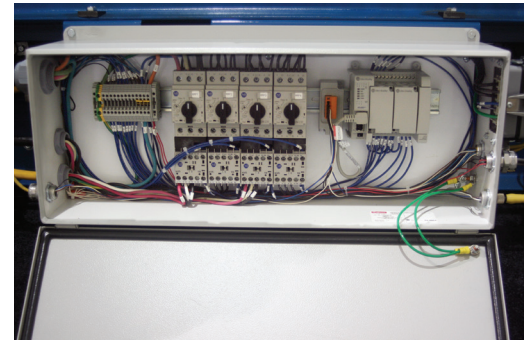
Benefits:

- Utilized in a wide range of applications
- Increased reliability and performance
- Low cost of ownership
- Reduced installation time
- No pneumatic clutches or associated components which can be hard to trouble shoot in the field
- Easy to understand and less required maintenance than clutches
- Free of sensor rollers or pneumatic valves to sense production location



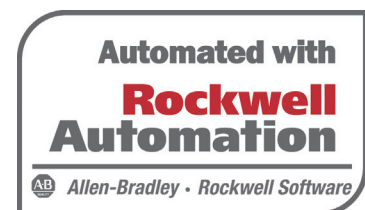
Flexibility:

- Control a wide range of conveyors such as Chain Driven Live Roller, Drag Chain, 90° Chain Transfer and Turntable Units
- Applications can include operator work stations, load/unload zones and integration with other equipment
- Lower conveyor elevations possible compared to traditional clutch style accumulation systems
- Expandable and program can be modified



Energy Efficient:

- No continuous running motors, zone motors only operate when movement of product is required
- Quiet operation
- Less wear on mechanical components
- Photo-eyes used to sense product location



Alba